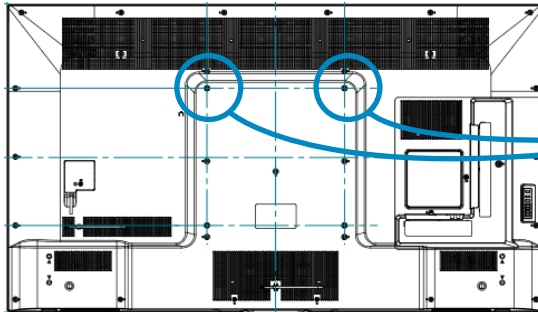




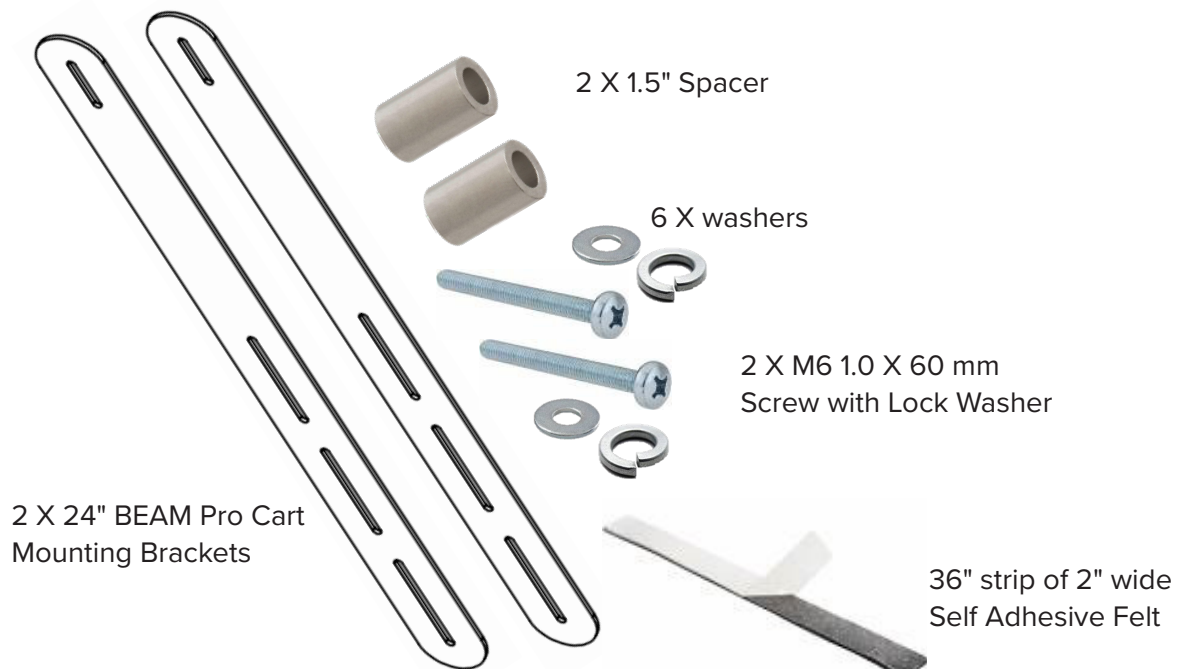
# BEAM Pro Cart Mount Quick Start Guide

The BEAM Pro cart mount kit is designed to mount BEAM Pro on top of a display. The recommended position of BEAM Pro is centered on the top of the display. The Cart Mount kits are designed to be installed in between the display itself and the mounting system used to hold the display to the cart.



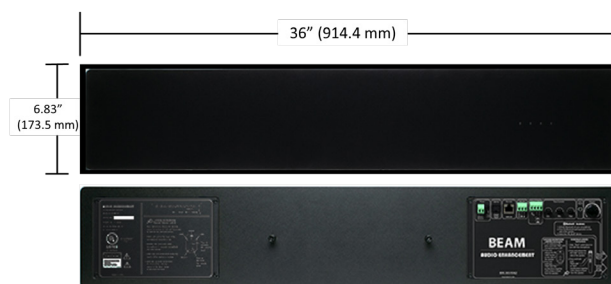
The BEAM Pro Cart Mount is designed to mount to the 2 upper VESA mounting points on the display

BEAM Pro Cart Mount Kit  
3020-0170  
Cart Mount Kit includes\*:



## BEAM System

Dimensions  
6.83 (H) x 36.00 (W) x 3.30 (D) in. (173.5 x 914.40 x 83.9 mm)

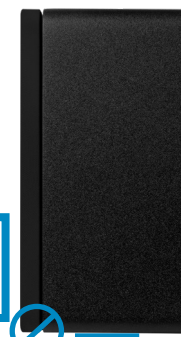


3.3" (83.9 mm)

## Step 1

Apply the 36" strip of 2" wide Self Adhesive Felt to the bottom of the BEAM Pro to prevent vibration. Ensure that the BEAM Pro bottom surface is clean, free of dirt and oil.

- Make sure that the self adhesive felt is adhered to the solid vinyl surface of BEAM Pro, NOT the cloth covered speaker grille
- Peel back 2" of the paper covering the adhesive
- Press the felt, adhesive side down onto the solid vinyl surface of the bottom of the BEAM Pro, making sure to align the felt straight along the BEAM Pro
- Slowly peel back the remainder of the paper covering, exposing the adhesive, applying pressure to the felt as the adhesive is exposed

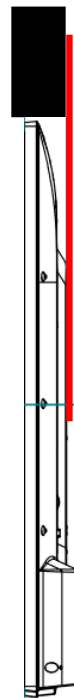


Do not apply felt to BEAM Pro's cloth grille

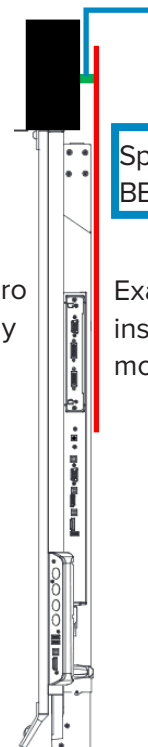
NOTE: For the remainder of the steps, it is recommended that the display be mounted to the brackets that will attach it to the cart before proceeding.

## Step 2

- Determine if the included spacers will need to be used with your particular display
- BEAM Pro should be installed on the top of the display
- BEAM Pro should be installed as close to flush with the front of the display as possible



Example of BEAM Pro installed on a display that is only slightly thicker than 3"

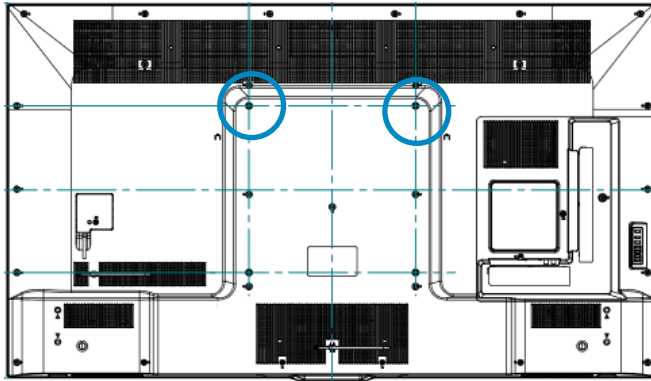


Spacer included with BEAM Pro Cart Mount Kit

Example of BEAM Pro installed on a display that is more than 5" thick

### Step 3

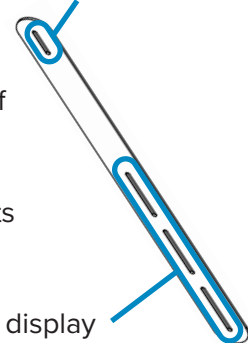
Attach the BEAM Pro brackets to the top two VESA mounting points — in-between the display and the mounting bracket.



Based on the size of the display, you will need to determine which mounting slots to use.

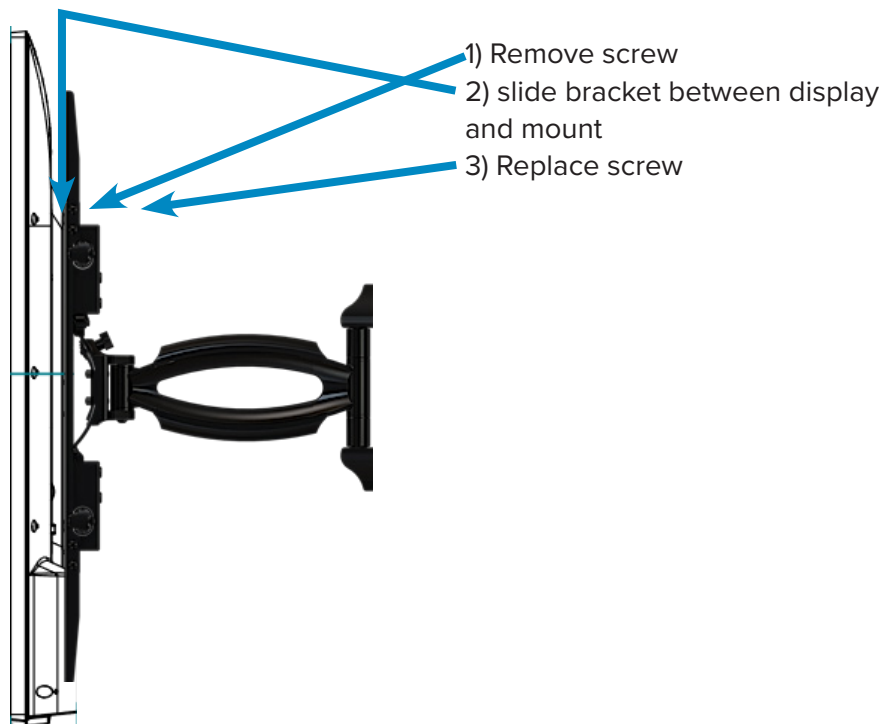
Mounting slots to display

Mounting slot to BEAM Pro



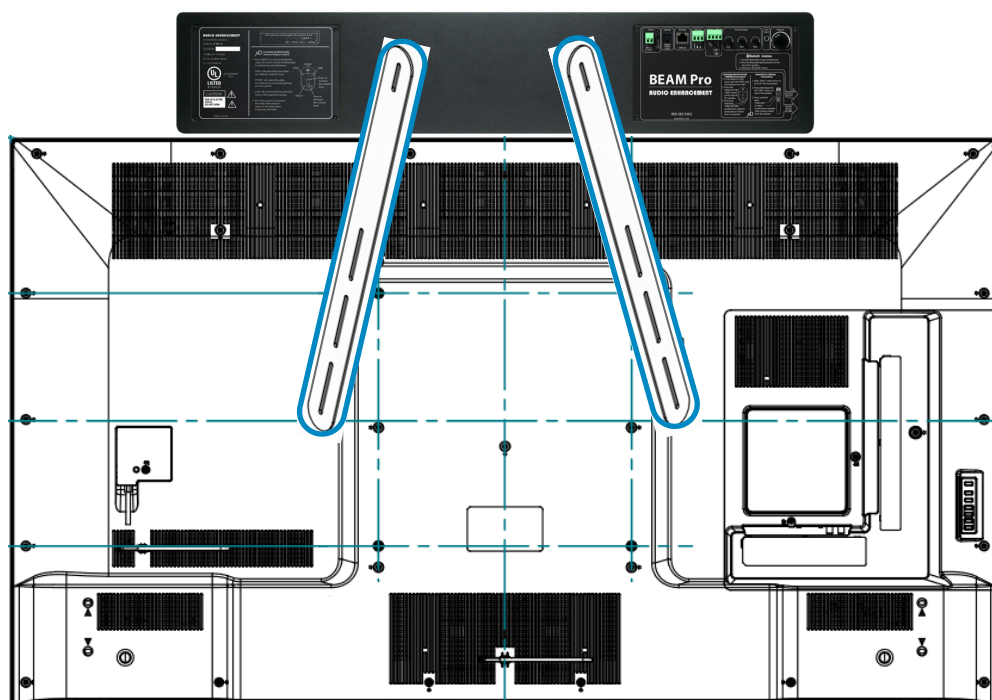
Make sure the display is already attached to its cart bracket according to the manufacturers instructions.

- 1) Remove the one screw on the left upper VESA Mounting point.
- 2) Insert the BEAM Pro Bracket in between the display and the mounting bracket.
- 3) Re-insert the screw through the mounting bracket, the newly inserted BEAM Pro bracket, and into the VESA Mounting point on the display.



## Step 4

After both brackets have been attached to the display — mount BEAM Pro to the brackets on top of the display.



If you determined in STEP 2 that you will need to use the spacers included with the BEAM Pro Cart Mount kit; then insert the Spacer in-between BEAM Pro and the BEAM Pro Bracket.

